

**ELECTORAL AREA H
OFFICIAL COMMUNITY
PLAN** **DRAFT**

**MAP NO. 6
ENVIRONMENTALLY SENSITIVE
DEVELOPMENT PERMIT AREAS**

- Electoral Area H Official Community Plan Area Boundary
- Electoral Area Boundary
- Village Centres
- Qualicum First Nation

**Development Permit Area No. 1
Freshwater and Fish Habitat Protection**

- All Mapped and Unmapped Streams that are Subject to the "Riparian Areas Regulation" within the shaded area shown on inset Map
- Qualicum River, Thames Creek and Nile Creek
- Watercourses
- Waterbodies
- Wetlands (Compiled from multiple sources)

**Development Permit Area No. 2
Eagle and Heron Nesting Trees**

- Blue Heron Nesting Site
- Bald Eagle Nesting Tree
Source: Wildlife Tree Service 2016

**Development Permit Area No. 3
Aquifers**

- Aquifer

Classification

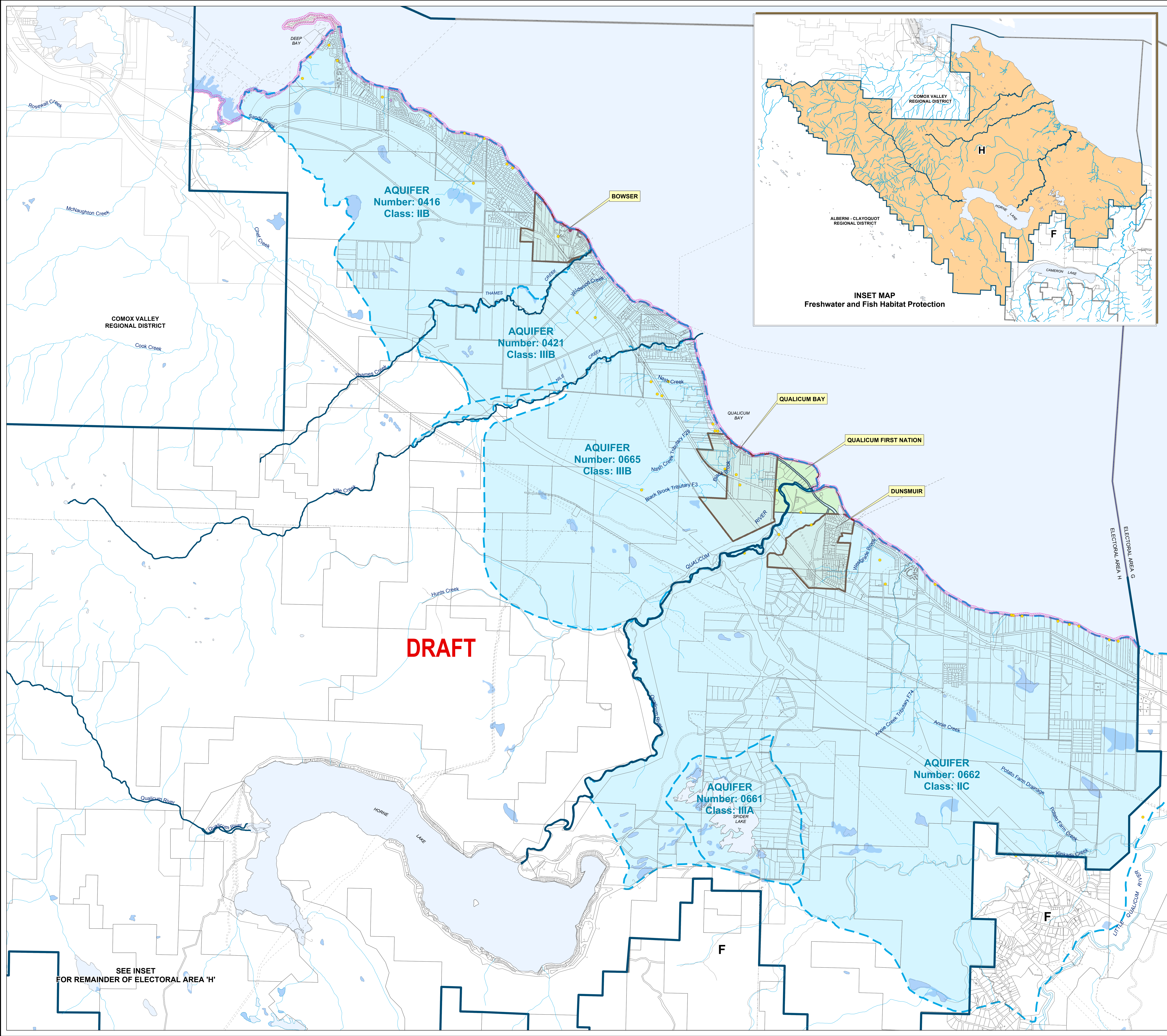
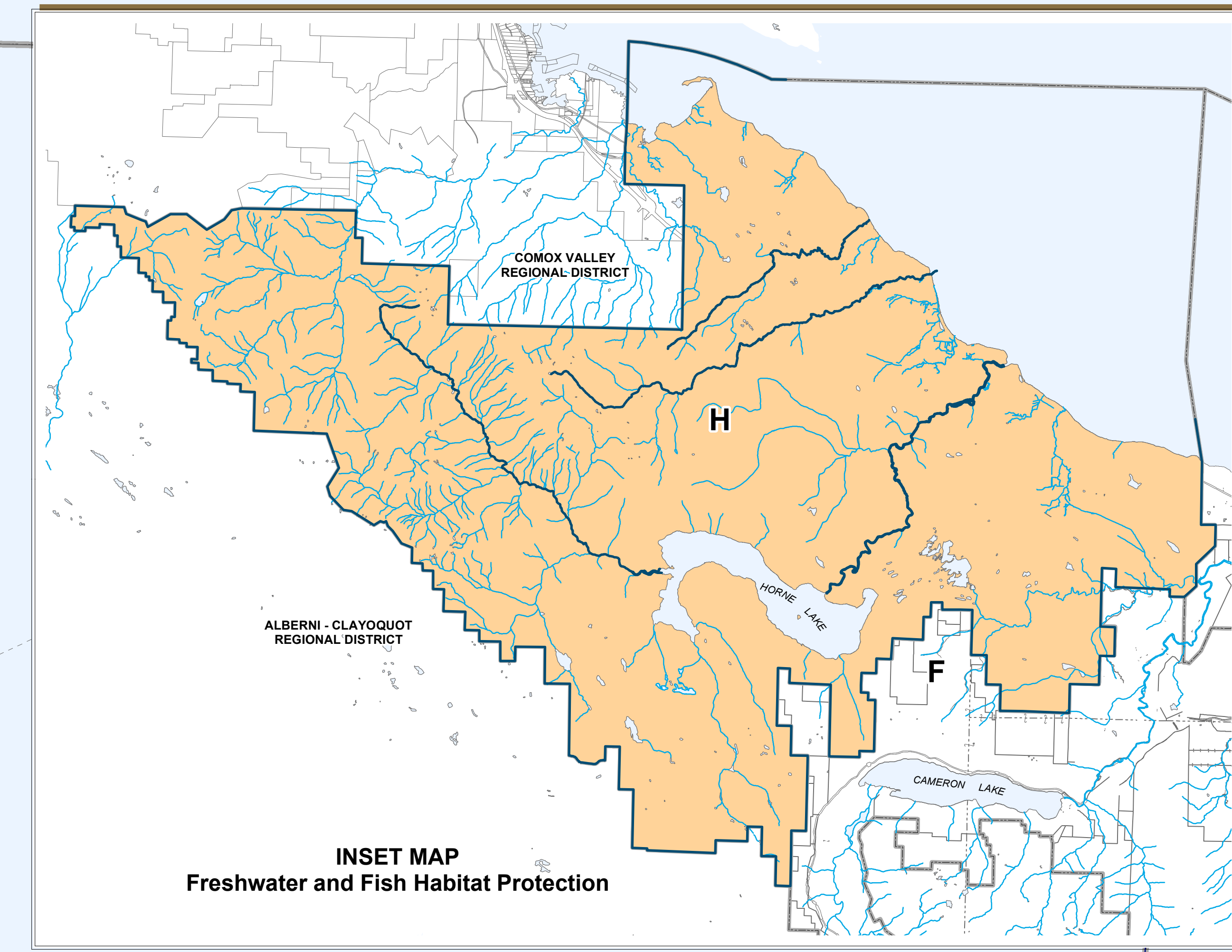
- Development Subclass
- II - Moderate Demand
(demand is moderate relative to productivity)
- III - Light Demand
(demand is light relative to productivity)

**Vulnerability Subclass
(vulnerability to contamination from surface source)**

- A - High
- B - Moderate
- C - Low

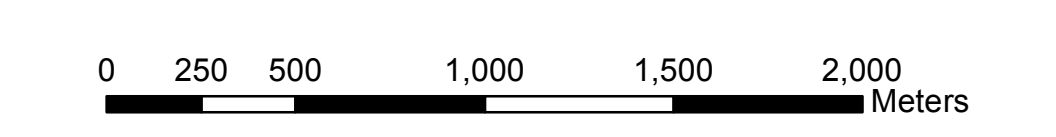
**Development Permit Area No. 4
Marine Coast**

- Development Permit Area No. 4 - Marine Coast



SEE INSET
FOR REMAINDER OF ELECTORAL AREA 'H'

Chairperson _____ Corporate Officer _____



BYLAW NO. XXXX, 2017

October 3, 2017