



ELECTORAL AREA H OFFICIAL COMMUNITY PLAN **DRAFT**

MAP NO. 2b GROUNDWATER FEATURES

- Electoral H Official Community Plan Boundary
 - Electoral Area Boundary
 - Village Centres
 - Qualicum First Nation
 - Watercourses
 - Contour Interval 20m
 - Waterbodies
 - Watershed Boundary
 - Aquifer
- Classification
- Development Subclass
 II - Moderate Demand
 (demand is moderate relative to productivity)
 III - Light Demand
 (demand is light relative to productivity)
- Vulnerability Subclass
 (vulnerability to contamination from surface source)
 A - High
 B - Moderate
 C - Low

Aquifer 416 Groundwater Recharge Area
 Source: Aquifer and Well Protection Plan for the Deep Bay Improvement District, Payne Engineering Geology, 2016

Deep Bay Waterworks Improvement District

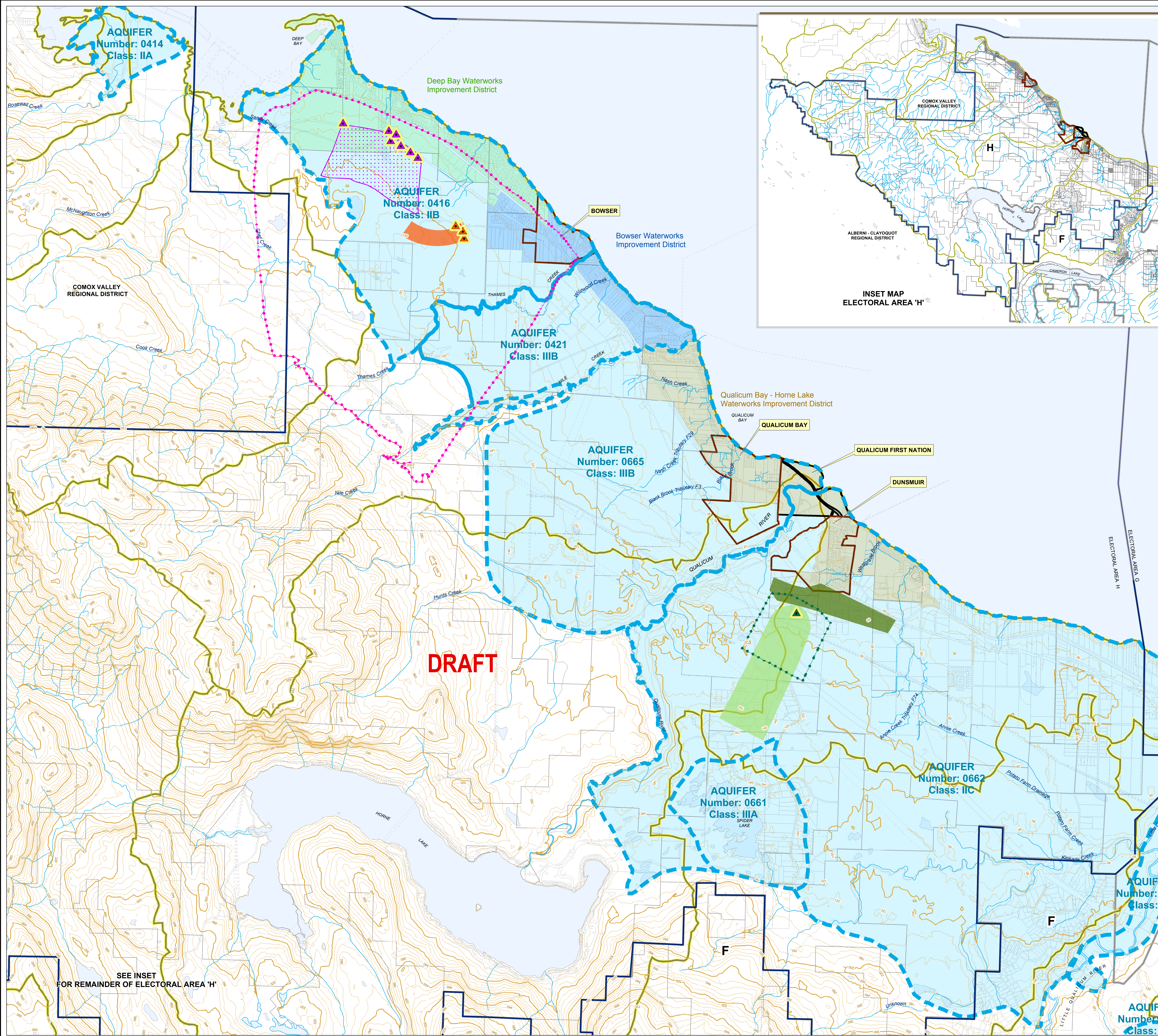
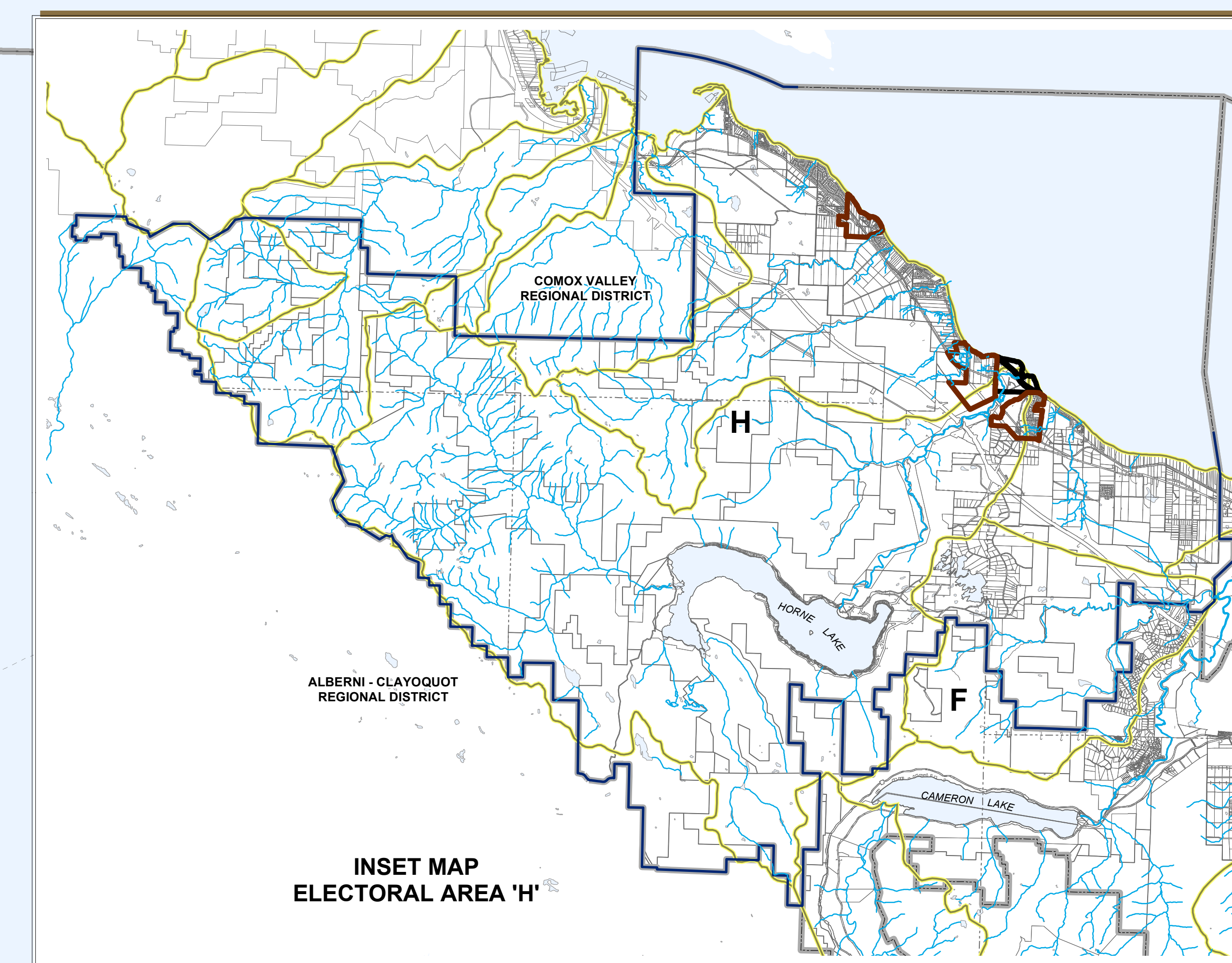
- Well
 - Well Protection Area
- Source: Aquifer and Well Protection Plan for the Deep Bay Improvement District, Payne Engineering Geology, 2016

Bowser Waterworks Improvement District

- Well
 - Well Capture Zone
- Source: Aquifer and Wellhead Protection Plan for Bowser Waterworks District, Payne Engineering Geology, 2015

Qualicum Bay - Horne Lake Waterworks Improvement District

- Well
 - Well Capture Zone
 - Risk of Artesian Conditions
 - Well Protection Area
- Source: Qualicum Bay Horne Lake Well Protection Plan, Waterline Resources Inc, 2016



DRAFT

SEE INSET FOR REMAINDER OF ELECTORAL AREA 'H'

Chairperson _____ Corporate Officer _____

BYLAW NO. XXXX, 2017

NORTH

0 250 500 1,000 1,500 2,000 Meters

October 3, 2017