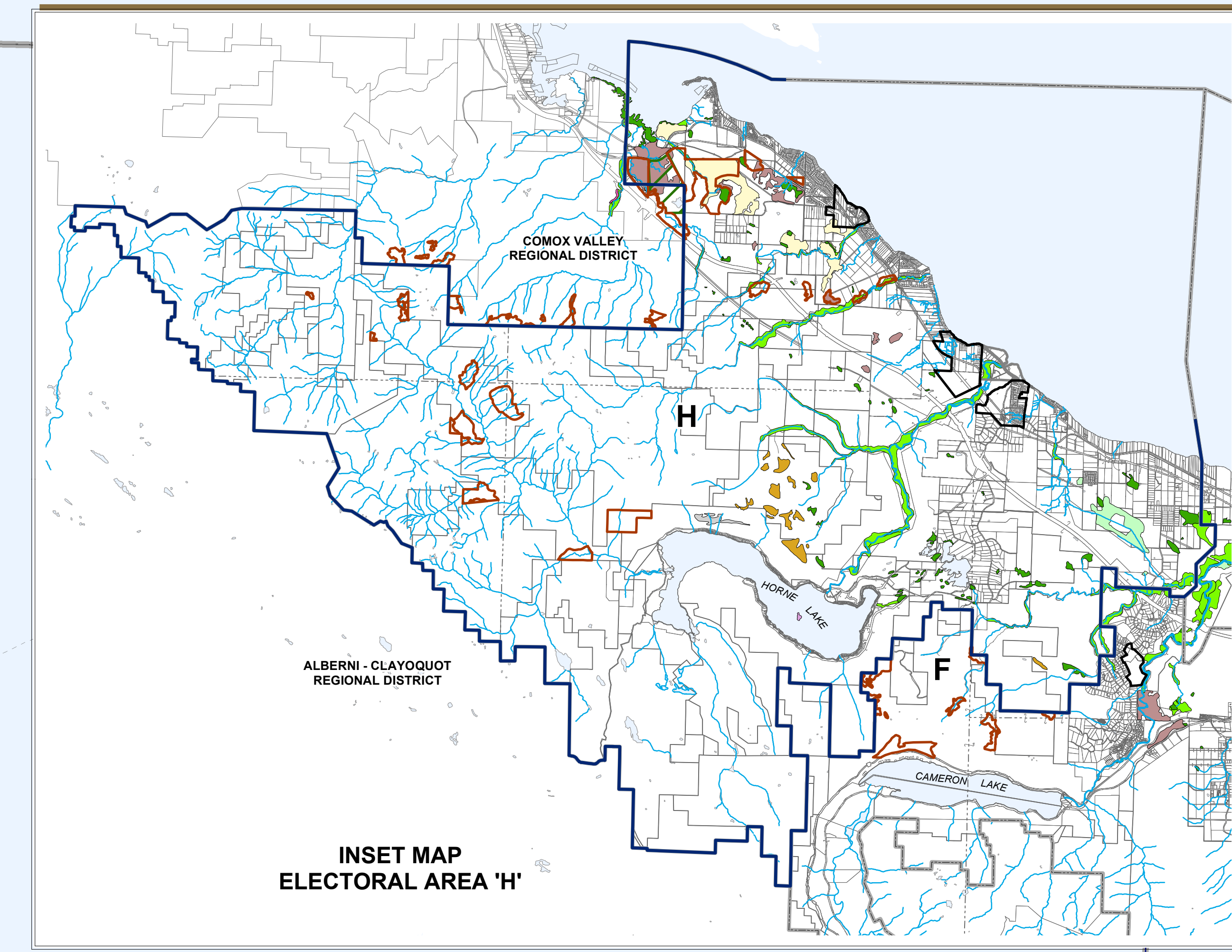
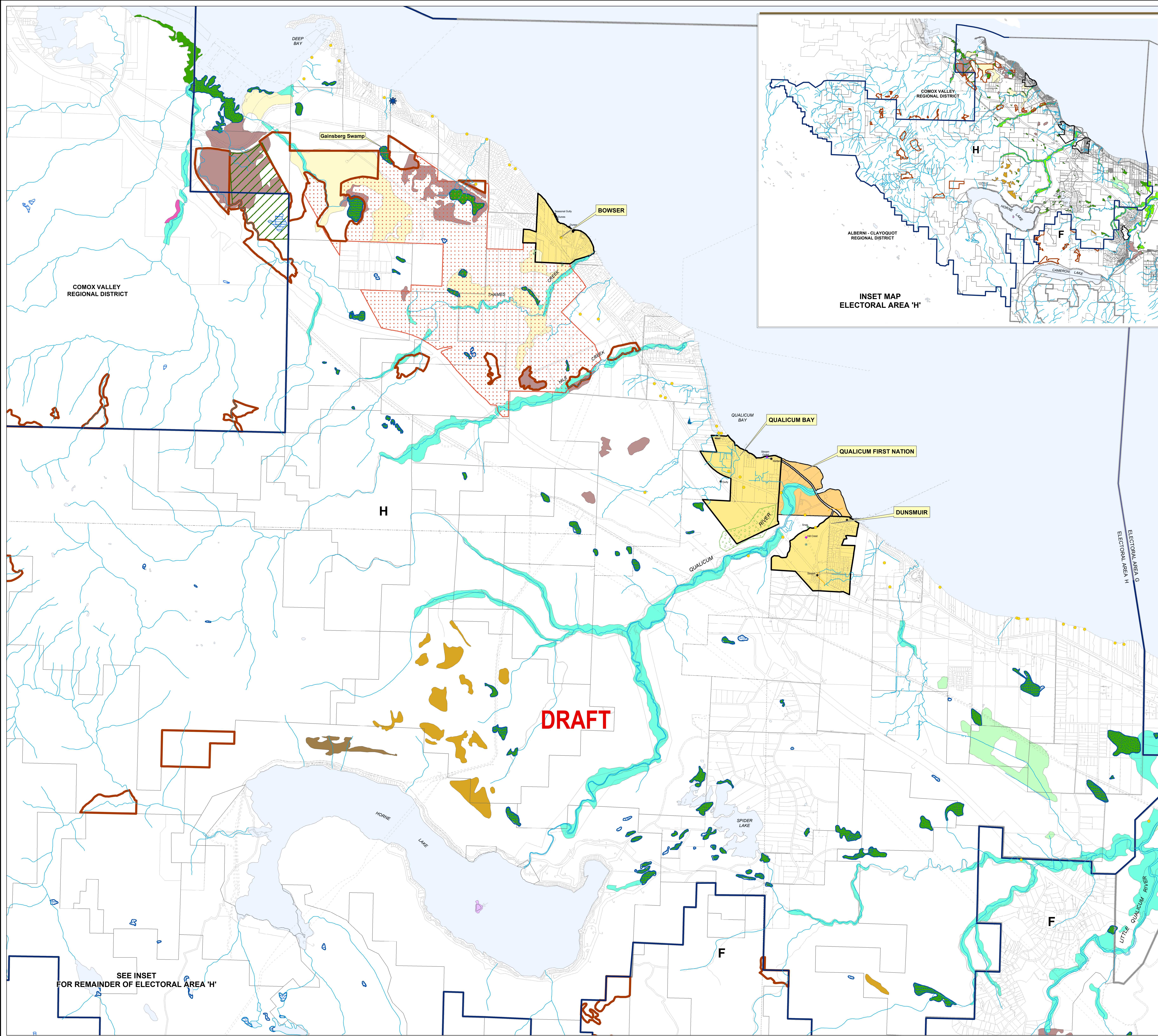


ELECTORAL AREA H OFFICIAL COMMUNITY PLAN **DRAFT**

MAP NO. 2 ENVIRONMENTAL FEATURES AND PROTECTED AREAS



- Eagle Tree
Source: Wildlife Tree Service 2016
- Great Blue Heron Colonies
Source: Province of BC 2016
- Watercourses
- Electoral Area H Official Community Plan Area Boundary
- Wetlands, Ducks Unlimited
- Wetlands, Fresh Water Atlas
- Old Growth Management Areas
- Bowser Ecological Reserve
- Coastal Douglas Fir Land Use Order (Crown Land)
- Electoral Area Boundary
- Village Centres
- Qualicum First Nation

- ### Significant Environmental Features of Village Areas
- Miscellaneous
 - New ESA/SEI
 - Veteran Tree
 - Stream (Estimated)
 - Dunes
 - Lodgepole Pine Forest
 - Wetland

SOURCE: M.Mather & T. Giesbrecht, 2002. Biophysical analysis of village nodes in Electoral Area H.

- ### Sensitive Ecosystem Inventory
- Coastal Bluff**
Vegetated rocky islet, rocky shoreline/grassland, rocky shoreline/moss, coastal cliff.
 - Terrestrial Herbaceous**
Natural grasslands or bryophyte-dominated vegetation, including rock outcrop/grassland and rock outcrop/moss types >20% shrub cover.
 - Older Forest**
Forest ecosystem with dominant age class > 100 years; coniferous, mixed with broadleaf component > 15%.
 - Riparian**
All stages of floodplain vegetation including riparian vegetation associated with gullies.
 - Sparsely Vegetated**
Ecosystems with sparse vegetation; cliff, sand dune, spit.
 - Wetland**
Ecosystem with wet soil and moisture-dependent plants; bog, fen, marsh, swamp, shallow water, wet meadow.
 - Woodland**
Open woodlands (stands of Garry oak, and mixed stands of Garry oak/Arbutus, Garry oak/Douglas-fir, Arbutus/Douglas-fir).

- ### Areas With General Biodiversity Values
- Seasonally flooded agricultural field**
 - Second Growth Forest**
Forested ecosystem with dominant age class 60 - 100 years; coniferous, mixed with broadleaf component > 15%.

Source: Sensitive Ecosystems of East Vancouver Island & Gulf Islands. Environment Canada and the BC Ministry of Environment, Lands and Parks. March, 2004

Chairperson _____ Corporate Officer _____

NORTH

0 250 500 1,000 1,500 2,000 Meters

BYLAW NO. xxxx 2017

October 3, 2017

SEE INSET
FOR REMAINDER OF ELECTORAL AREA 'H'

DRAFT