

SEAL:

2	17.FEB.22	RE-ISSUE FOR DP	CW
1	16.DEC.23	ISSUED FOR DP	CW
NO.	DATE	REVISION DESCRIPTION	DR.

CLIENT: SEACLIFFE GROUP

PROJECT:

FAIRWINDS LANDING

3521 DOLPHIN DRIVE, NANOOSE BAY CITY

WITH: COLLABOR8 ARCHITECTURE + DESIGN INC.

DRAWING TITLE:

LANDSCAPE PLAN

DATE: 12.DEC.21 DRAWING NUMBER:

SCALE: 1/32"=1'-0"

DRAWN: PCM CW

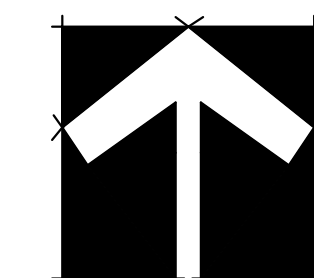
DESIGN: PCM CW

CHK'D: PCM PCM

PMG PROJECT NUMBER:

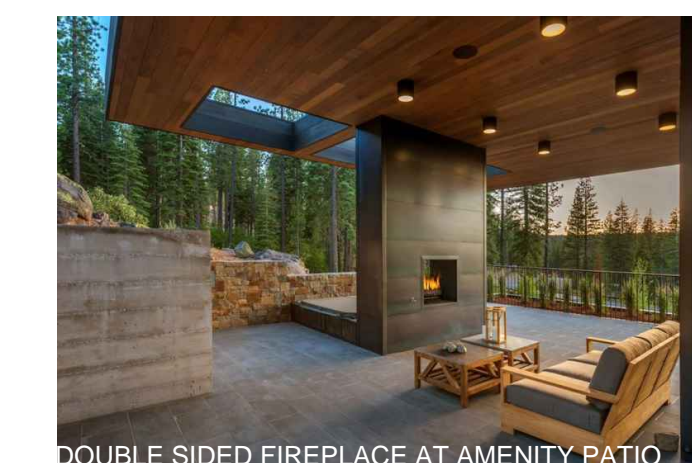
L1

OF 5



FIRE BOWL

CONCEPT IMAGES



DOUBLE SIDED FIREPLACE AT AMENITY PATIO



NATURAL ROCK FEATURES



SEASIDE MEADOW/LOW GROUNDCOVER AND GRASS



WOOD PILING INSPIRED LANDSCAPE FEATURES



CURVED ARBOR SEATING AREA

IRRIGATION NOTE:

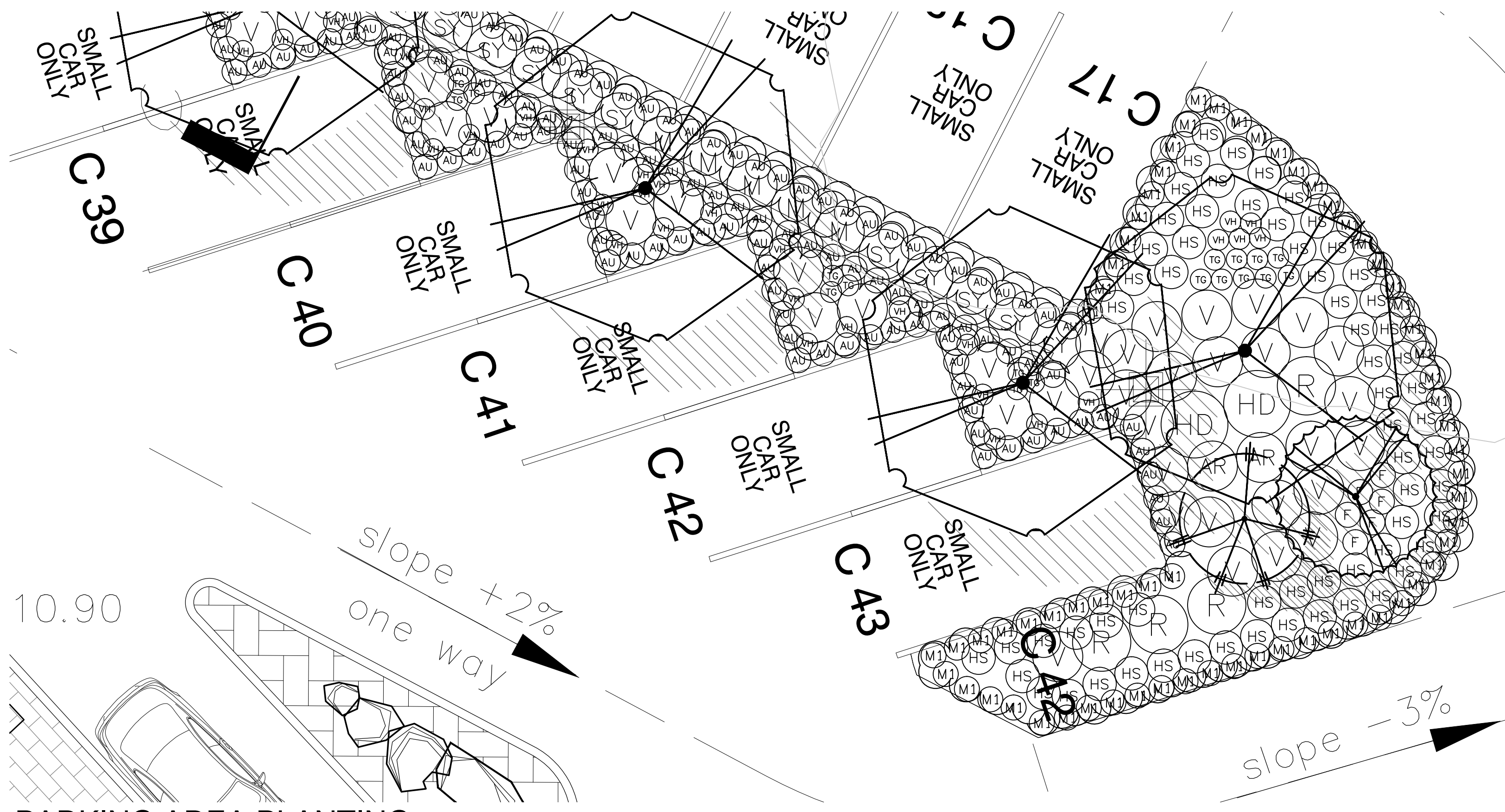
HIGH EFFICIENCY DRIP IRRIGATION SYSTEM TO BE DESIGNED AND INSTALLED BY AN IRRIGATION INDUSTRY ASSOCIATION OF BRITISH COLUMBIA CERTIFIED IRRIGATION DESIGNER. IRRIGATION TO BE SUPPLIED FOR ALL ON SLAB PLANTING, INDIVIDUAL PLANTERS AND IN HIGH TRAFFIC AREAS

PROPOSED TREE SCHEDULE

KEY	QTY	BOTANICAL NAME	COMMON NAME	PLANTED SIZE / REMARKS
17		ACER CIRCINATUM	VINE MAPLE	2.5M HT; B&B; 3 STEM CLUMP
28		ACER RUBRUM 'OCTOBER GLORY'	OCTOBER GLORY MAPLE	6CM CAL; 2M STD; B&B
18		AMELANCHIER x GRANDIFLORA 'AUTUMN BRILLIANCE'	AUTUMN BRILLIANCE SERVICEBERRY	5CM CAL; B&B
16		CORNUS KOUSA X NUTTALLII 'STARLIGHT'	STARLIGHT HYBRID DOGWOOD	2.5M HT; B&B
11		LIQUIDAMBAR STYRACIFLUA 'SLENDER SILHOUETTE'	SLENDER SILHOUETTE SWEETGUM	6CM CAL; 2M STD; B&B
10		PICEA OMORICA	SERBIAN SPRUCE	3M HT; B&B
5		QUERCUS PALUSTRIS 'CROWN RIGHT'	CROWN RIGHT PIN OAK	8CM CAL; 1.8M STD; B&B

NOTES: PLANT SIZES IN THIS LIST ARE SPECIFIED ACCORDING TO THE CANADIAN LANDSCAPE STANDARD, LATEST EDITION (PREVIOUSLY BC LANDSCAPE STANDARD). CONTAINER SIZES SPECIFIED AS PER CNLA STANDARDS. BOTH PLANT SIZE AND CONTAINER SIZE ARE THE MINIMUM ACCEPTABLE SIZES. REFER TO SPECIFICATIONS FOR DEFINED CONTAINER MEASUREMENTS AND OTHER PLANT MATERIAL REQUIREMENTS. *SEARCH AND REVIEW: MAKE PLANT MATERIAL AVAILABLE FOR OPTIONAL REVIEW BY LANDSCAPE ARCHITECT AT SOURCE OF SUPPLY. AREA OF SEARCH TO INCLUDE LOWER MAINLAND AND FRASER VALLEY. *SUBSTITUTIONS: OBTAIN WRITTEN APPROVAL FROM THE LANDSCAPE ARCHITECT PRIOR TO MAKING ANY SUBSTITUTIONS TO THE SPECIFIED MATERIAL. UNAPPROVED SUBSTITUTIONS WILL BE REJECTED. ALLOW A MINIMUM OF FIVE DAYS PRIOR TO DELIVERY FOR REQUEST TO SUBSTITUTE. SUBSTITUTIONS ARE SUBJECT TO CANADIAN LANDSCAPE STANDARD - DEFINITION OF CONDITIONS OF AVAILABILITY. ALL LANDSCAPE MATERIAL AND WORKMANSHIP MUST MEET OR EXCEED CANADIAN LANDSCAPE STANDARD'S LATEST EDITION. ALL PLANT MATERIAL MUST BE PROVIDED FROM CERTIFIED SOURCE. EDGE WAREHOUSE.

SEAL:

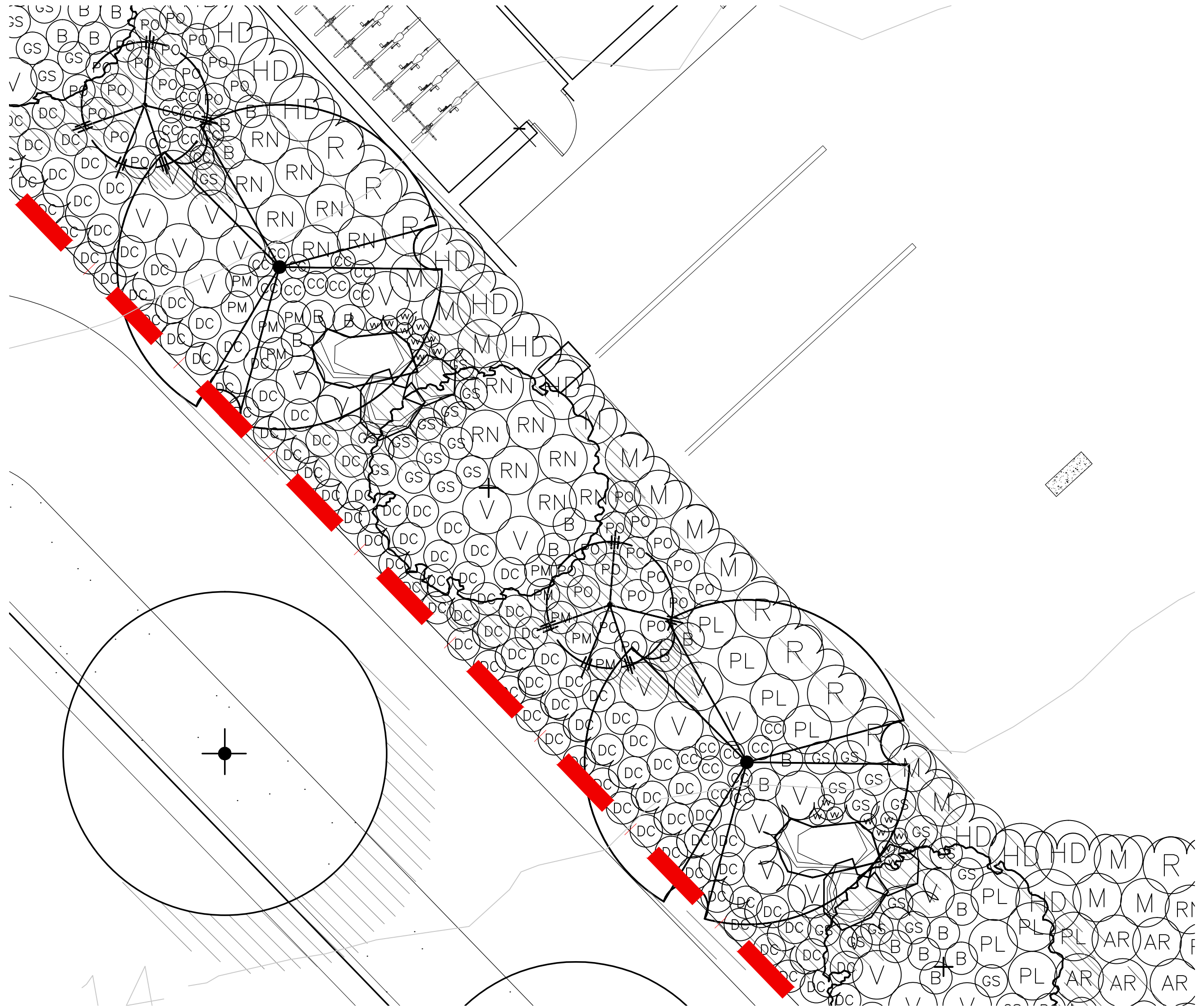


PARKING AREA PLANTING

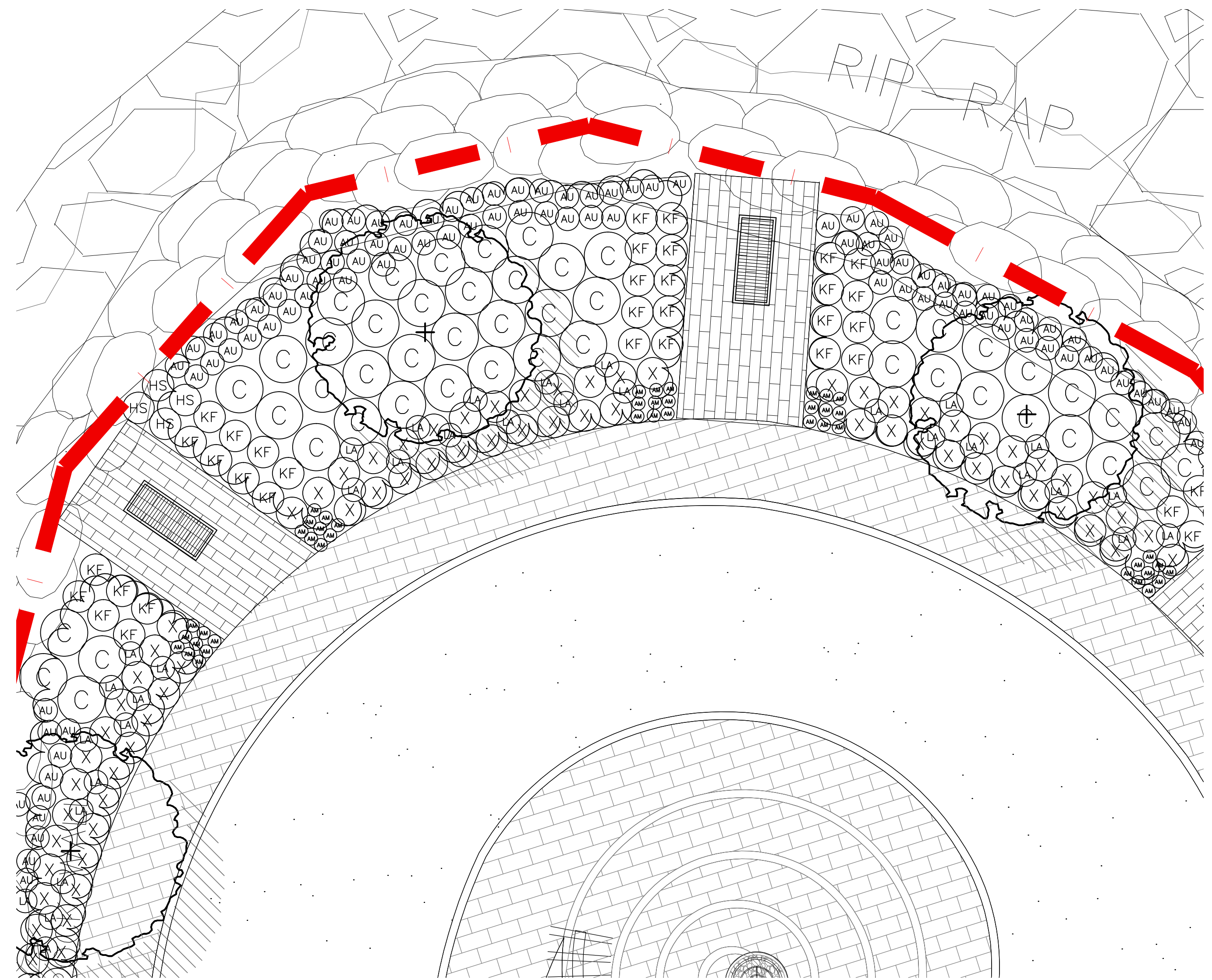
PROPOSED SHRUB SCHEDULE			PMG PROJECT NUMBER: 16-205	
KEY	QTY	BOTANICAL NAME	COMMON NAME	PLANTED SIZE / REMARKS
SHRUB				
(M)		ARONIA MELANOCARPA	CHOKEBERRY	#3 POT; 50CM
(C)		CORNUS SERICEA 'KELSEY'	DWARF KELSEY DOGWOOD	#3 POT; 80CM
(S)		GAULTHERIA SHALLON	SALAL	#2 POT; 45CM
(D)		HOLODISCUS DISCOLOR	OCEANSPRAY	#3 POT; 80CM
(E)		MAHONIA AQUIFOLIUM	OREGON GRAPE	#3 POT; 50CM
(F)		PACHYSTIMA MYRSINITES	FALSE BOX	#3 POT; 50CM
(G)		PHILADELPHUS LEWISII	LEWIS' MOCK ORANGE	#3 POT; 60CM
(H)		RIBES SANGUINEUM	RED FLOWERING CURRANT	#3 POT; 80CM
(I)		ROSA NUTKANA	NOOTKA ROSE	#3 POT; 60CM
(J)		SYMPHORICARPOS ALBUS	SNOWBERRY	#2 POT; 30CM
(K)		TAXUS X MEDIA 'HICKSII'	HICK'S YEW	1.2M B&B
(L)		VACCINIUM OVATUM	EVERGREEN HUCKLEBERRY	#3 POT; 60CM
GRASS				
(A)		CALAMAGROSTIS ACUTIFLORA 'KARL FOERSTER'	FEATHER REED GRASS	#1 POT
(B)		DESCHAMPSIA CESPITOSA	TUFTED HAIR GRASS	#1 POT
(C)		HELICOTRICHON SEMPERVIRENS	BLUE OAT GRASS	#1 POT
(D)		STIPA TENUISSIMA	MEXICAN FEATHER GRASS	#1 POT
PERENNIAL				
(E)		ARMERIA MARITIMA	COMMON THRIFT	15CM POT
(F)		LAVENDULA ANGSTIFOLIA 'MUNSTEAD'	ENGLISH LAVENDER; COMPACT; VIOLET-BLUE	#1 POT
(G)		TELLIMA GRANDIFLORA	FRINGE CUP	15CM POT
(H)		VANCOUVERIA HEXANDRA	INSIDE-OUT FLOWER	#1 POT
GROUND COVER				
(A)		ARCTOSTAPHYLOS UVA-URSI	KINNIKINICK	#1 POT; 20CM
(B)		BLECHNUM SPICANT	DEER FERN	#1 POT; 20CM
(C)		CORNUS CANADENSIS	BUNCHBERRY	#1 POT; 20CM
(D)		FRAGARIA VIRGINIANA	WILD STRAWBERRY	#1 POT; 20CM
(E)		MAHONIA REPENS	CREeping OREGON GRAPE	#1 POT; 20CM
(F)		POLYSTICHUM MUNITUM	WESTERN SWORD FERN	#1 POT; 25CM
(G)		VACCINIUM VITIS IDAEA	LINGONBERRY	#1 POT

NOTES: * PLANT SIZES IN THIS LIST ARE SPECIFIED ACCORDING TO THE CANADIAN LANDSCAPE STANDARD, LATEST EDITION (PREVIOUSLY BC LANDSCAPE STANDARD). CONTAINER SIZES SPECIFIED AS PER CNLA STANDARDS. BOTH PLANT SIZE AND CONTAINER SIZE ARE THE MINIMUM ACCEPTABLE SIZES. REFER TO SPECIFICATIONS FOR DEFINED CONTAINER MEASUREMENTS AND OTHER PLANT MATERIAL REQUIREMENTS. * SEARCH AND REVIEW MAKE PLANT MATERIAL AVAILABLE FOR OPTIONAL REVIEW BY LANDSCAPE ARCHITECT AT SOURCE OF SUPPLY. AREA OF SEARCH TO INCLUDE LOWER MAINLAND AND FRASER VALLEY. * SUBSTITUTIONS: OBTAIN WRITTEN APPROVAL FROM THE LANDSCAPE ARCHITECT PRIOR TO MAKING ANY SUBSTITUTIONS TO THE SPECIFIED MATERIAL. UNAPPROVED SUBSTITUTIONS WILL BE REJECTED. ALLOW A MINIMUM OF FIVE DAYS PRIOR TO DELIVERY FOR REQUEST TO SUBSTITUTE. SUBSTITUTIONS ARE SUBJECT TO CANADIAN LANDSCAPE STANDARD - DEFINITION OF CONDITIONS OF AVAILABILITY. ALL LANDSCAPE MATERIAL AND WORKMANSHIP MUST MEET OR EXCEED CANADIAN LANDSCAPE STANDARD'S LATEST EDITION. ALL PLANT MATERIAL MUST BE PROVIDED FROM CERTIFIED DISEASE FREE NURSERY

DOLPHIN DRIVE PLANTING



PARK/ WATERFRONT PLANTING



NO.	DATE	REVISION DESCRIPTION	DR.
2	17.FEB.22	RE-ISSUE FOR DP	CW
1	16.DEC.23	ISSUED FOR DP	CW

CLIENT: SEACLIFFE GROUP

PROJECT:
FAIRWINDS LANDING
3521 DOLPHIN DRIVE, NANOOSSE BAY CITY
WITH: COLLABOR8 ARCHITECTURE + DESIGN INC.

DRAWING TITLE:
SAMPLE PLANTING PLANS

DATE: 16.DEC.21 DRAWING NUMBER:
SCALE: 3/16"=1'-0"
DRAWN: PCM CW
DESIGN: PCM CW
CHK'D: PCM PCM

L2
OF 5

PMG PROJECT NUMBER: 16-205

PROPOSED TREES



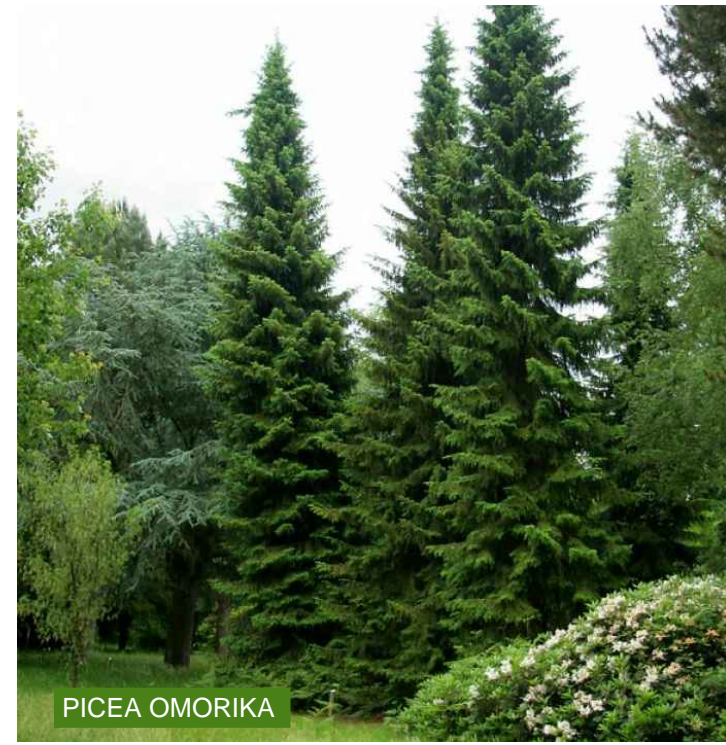
QUERCUS PALUSTRIS 'CROWN RIGHT'



ACER RUBRUM 'OCTOBER GLORY'



ACER CIRCINATUM



PICEA OMORIKA



AMELANCHIER ALNIFOLI 'AUTUMN BRILLIANCE'



CORNUS KOUSA X NUTALLII 'STARLIGHT'



LIQUIDAMBAR STYRACIFLUA 'SLENDER SILHOUETTE'

PROPOSED SHRUBS



RIBES SANGUINEUM



TAXUS X MEDIA 'HICKSII'



GAULTHERIA SHALLON



MAHONIA AQUIFOLIUM



PHILADELPHUS LEWISII



ARONIA MELANOCARPA



CORNUS SERICEA 'KELSEYII'



ROSA NUTKANA



SYMPHORICARPOS ALBUS



HOLODISCUS DISCOLOR



VACCINIUM OVATUM



PAXISTIMA MYRSINITES

PROPOSED PERENNIALS



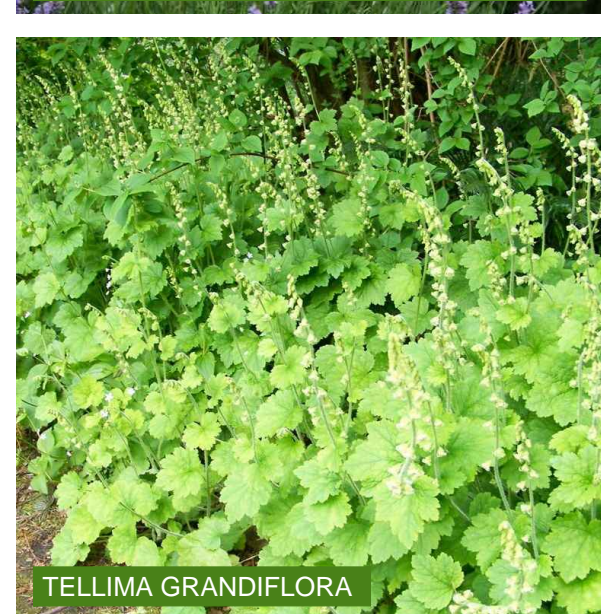
ACHILLEA MILEFOLIUM



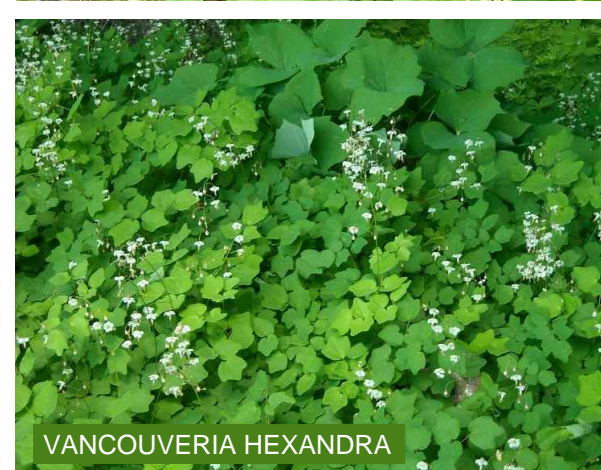
ARMERIA MARITIMA



LAVENDULA ANGSTIFOLIA 'MUNSTEAD'



TELLIMA GRANDIFLORA



VANCOUVERIA HEXANDRA

PROPOSED GROUNDCOVERS



MAHONIA REPENS



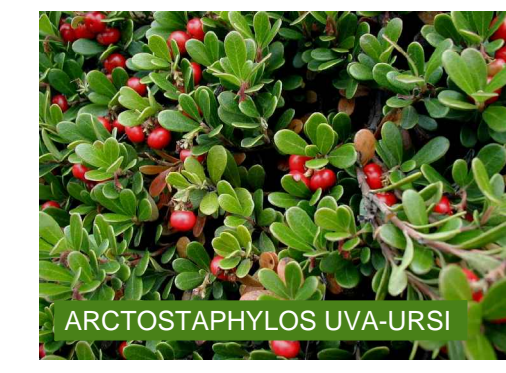
FRAGARIA VIRGINIANA



VACCINIUM VITIS-IDAEA



CORNUS CANADENSIS



ARCTOSTAPHYLOS LIVA-URSII



BLECHNUM SPICANT



POLYSTICHUM MUNITUM

PROPOSED GRASSES



CALAMAGROSTIS ACUTIFLORA 'KARL FOERSTER'



HELIOTRICHON SEMPERVIRENS



STIPA TENNUISIMA



DESCHAMPسيا CESPITOSA

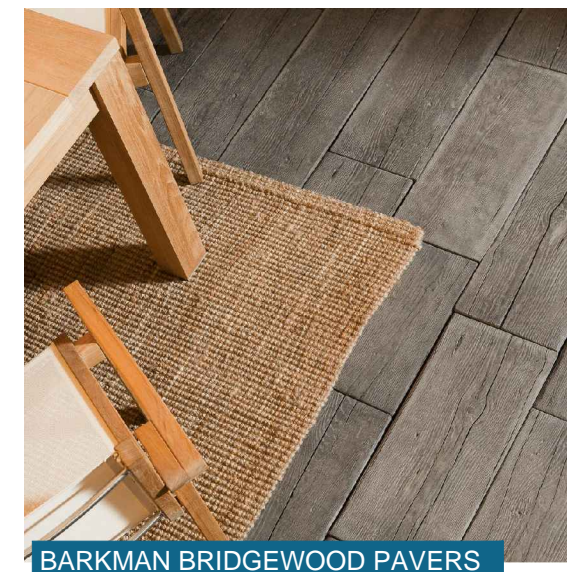
PROPOSED HARDSCAPES



MAGLIN MLB720-W BENCH; SILVER POWDERCOAT; SURFACE MOUNT USING TAMPER PROOF HARDWARE PER MANUFACTURER'S SPECIFICATIONS



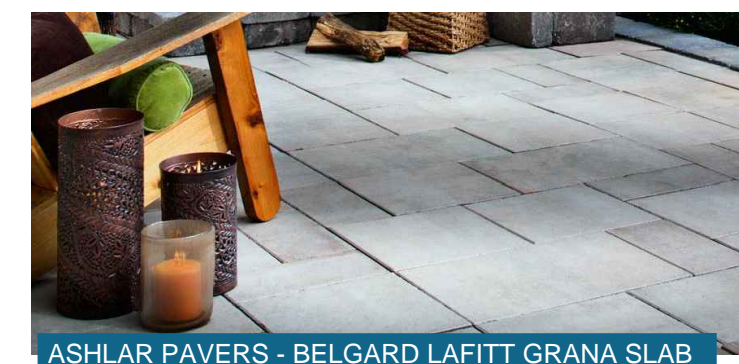
MAGLIN MCL720-W LOUNGE CHAIR; SILVER POWDERCOAT; IPE WOOD; SURFACE MOUNT USING TAMPER PROOF HARDWARE PER MANUFACTURER'S SPECIFICATIONS



BARKMAN BRIDGEWOOD PAVERS



SAWCUT CONCRETE



ASHLAR PAVERS - BELGARD LAFITT GRANA SLAB



MAGLIN MBR150 BIKE RACKS; SILVER POWDERCOAT; SURFACE MOUNT USING TAMPER PROOF HARDWARE PER MANUFACTURER'S SPECIFICATIONS



'CAMDEN' ROUND POT - AVAILABLE FROM ATLAS POTS; BLACK FIBERGLASS; 42"X30" & 30"X22"



NATURAL STONE FEATURES - RIVER ROCK AND BOULDERS



BARKMAN - HARVEST GROVE BBQ GRILL



SOLUS HEMI - FIRE BOWL - SHIITAKE COLOUR



REGENCY PT038 SEE THROUGH FIREPLACE INSERT



PHILIPS GARDCO SFV SINGLE LED ARRAY PARKING AREA LIGHT FIXTURE

© Copyright reserved. This drawing and design is the property of PMG Landscape Architects and may not be reproduced or used for other projects without their permission.



Suite C100 - 4185 Still Creek Drive
Burnaby, British Columbia, V5C 6G9
p: 604 294-0011 ; f: 604 294-0022

SEAL:

NO.	DATE	REVISION DESCRIPTION	DR.
2	17.FEB.22	RE-ISSUE FOR DP	CW
1	16.DEC.23	ISSUED FOR DP	CW

CLIENT: SEACLIFFE GROUP

PROJECT:

FAIRWINDS LANDING

3521 DOLPHIN DRIVE, NANOOSE BAY CITY

WITH: COLLABOR8 ARCHITECTURE + DESIGN INC..

DRAWING TITLE:

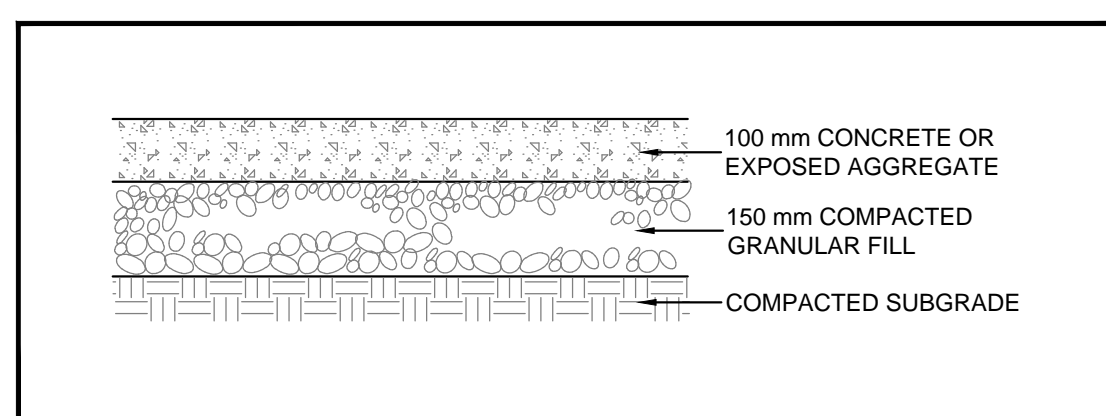
LANDSCAPE DETAILS

DATE:	16.DEC.21	DRAWING NUMBER:	
SCALE:	AS SHOWN		
DRAWN:	PCM CW		
DESIGN:	PCM CW		
CHK'D:	PCM PCM		

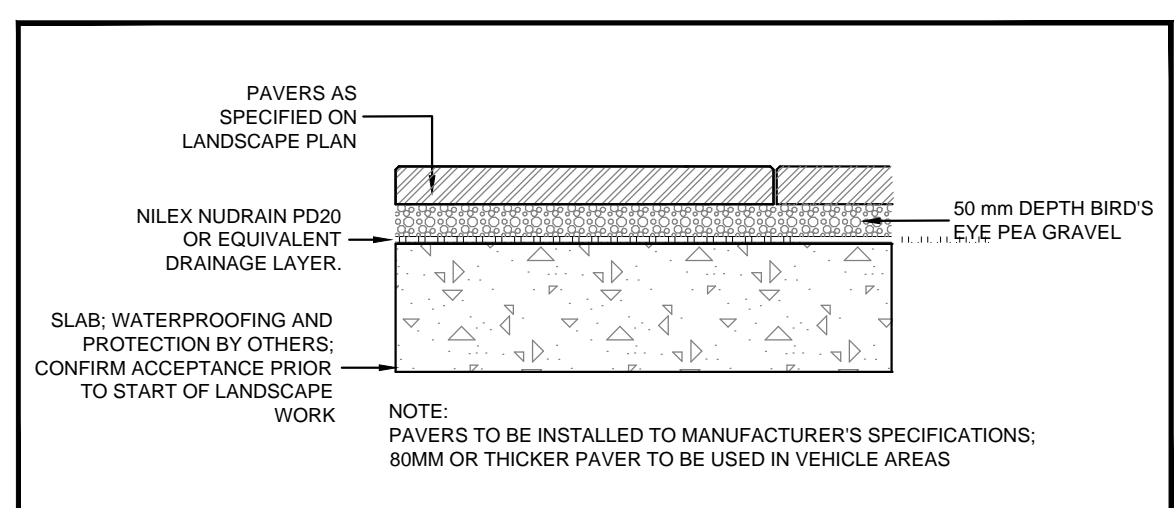
L3

OF 5

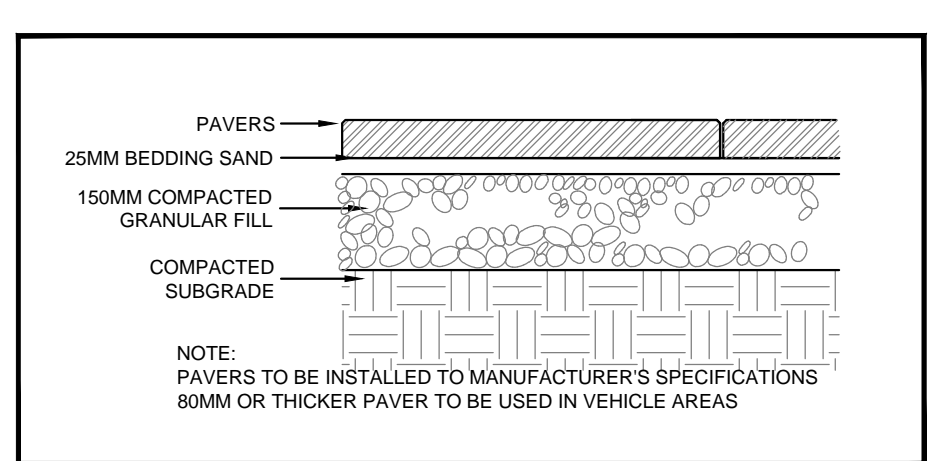
SEAL:



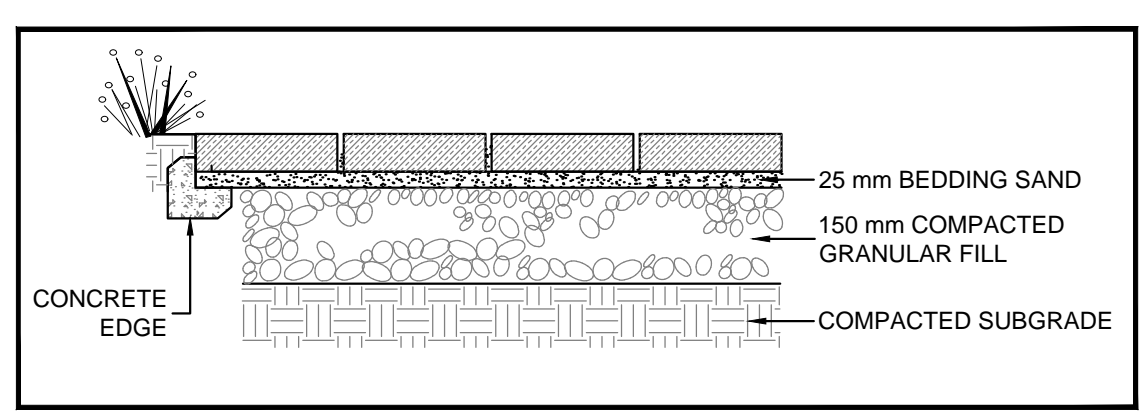
1 CONCRETE ON GRADE
1"=1'-0"



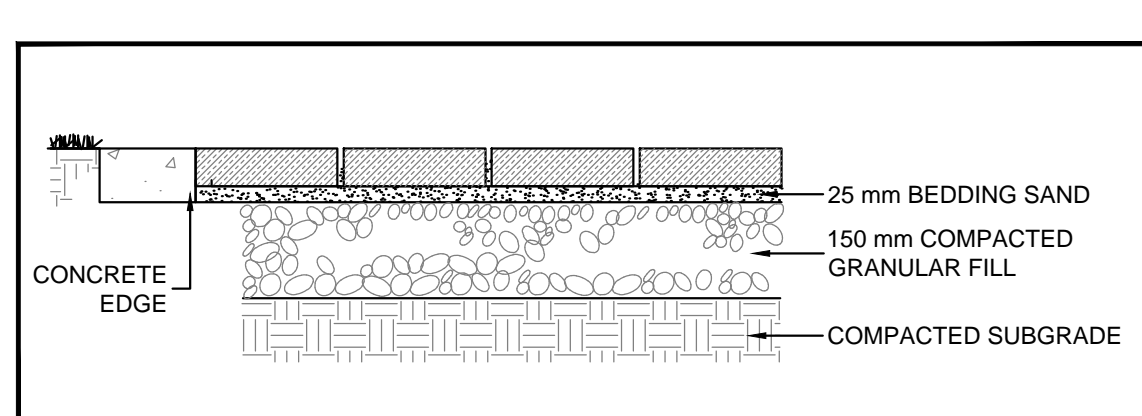
2 PAVERS ON SLAB
1:10



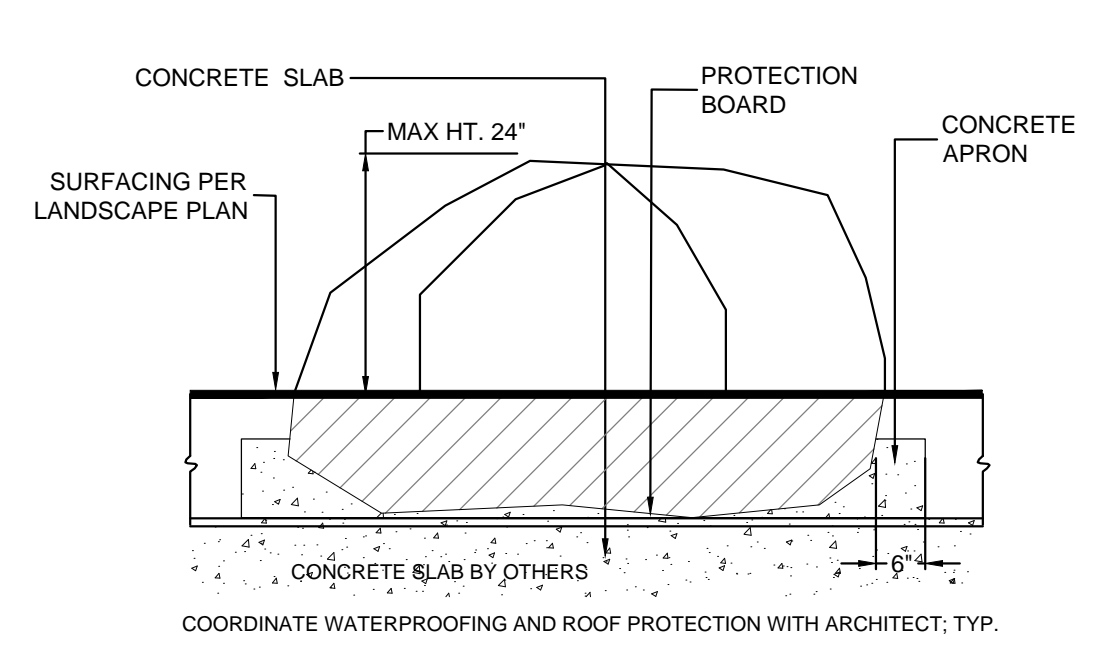
3 PAVERS ON GRADE
1:10



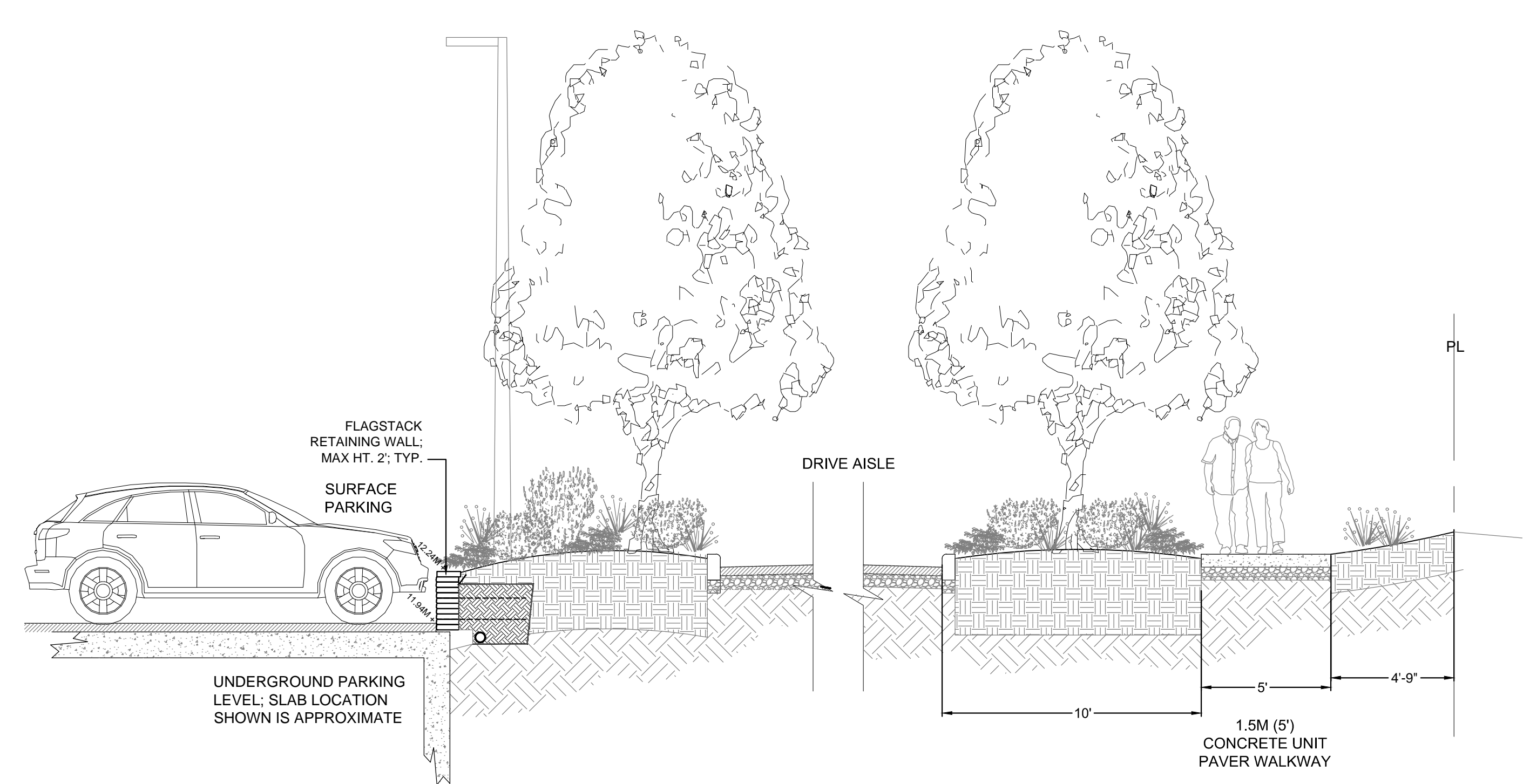
4 PAVERS EDGE
1"=1'-0"



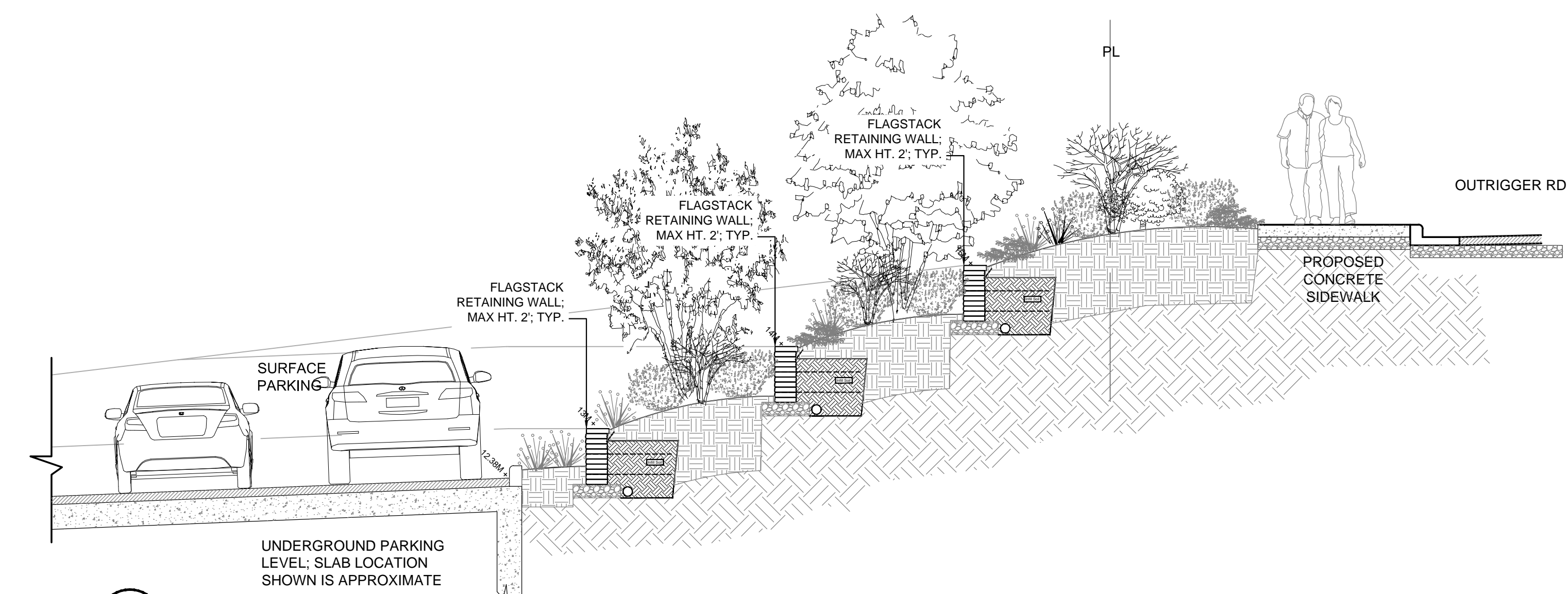
4B PAVERS EDGE/GRASS
1"=1'-0"



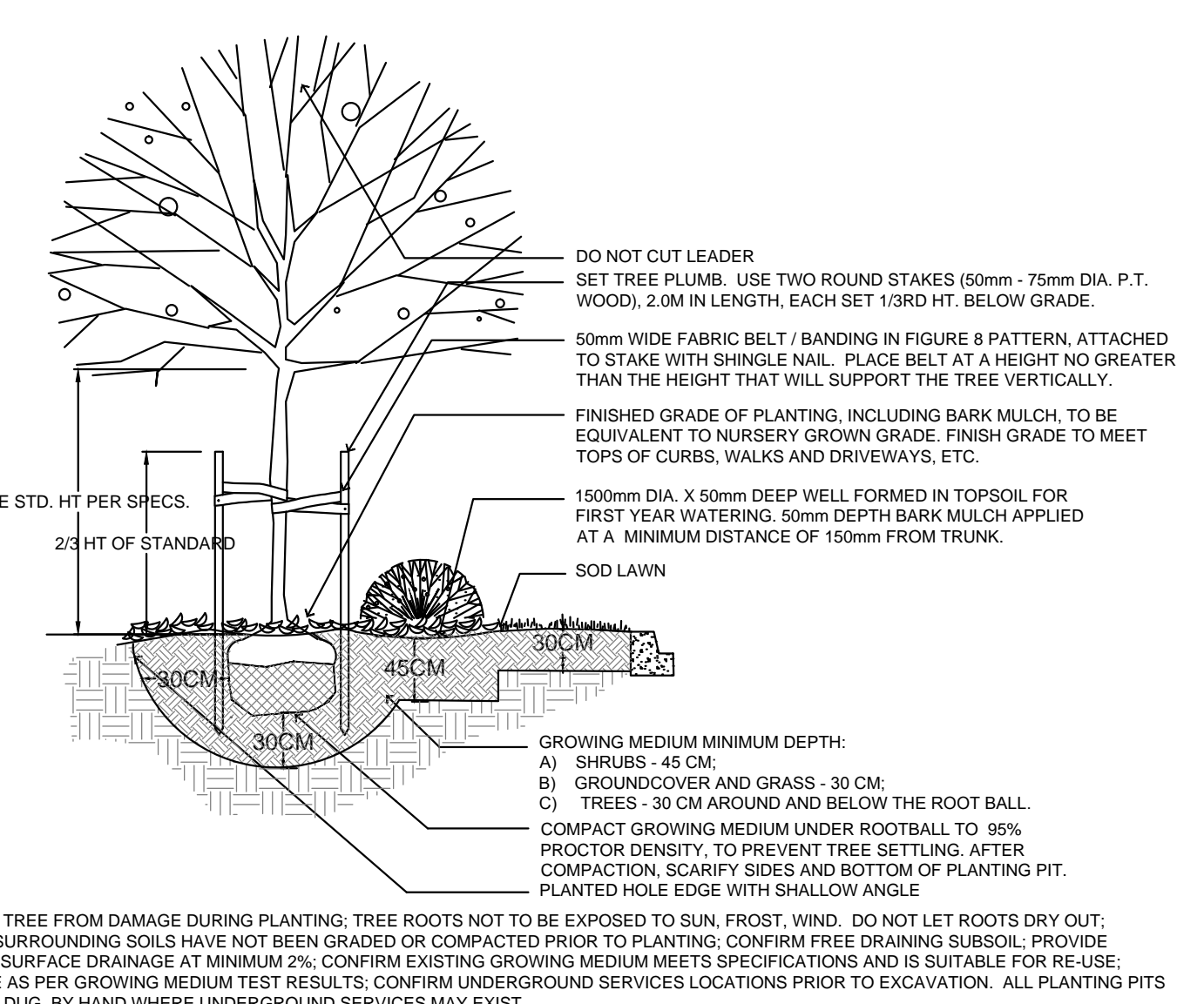
5 EMBEDDED BOULDER
N.T.S.



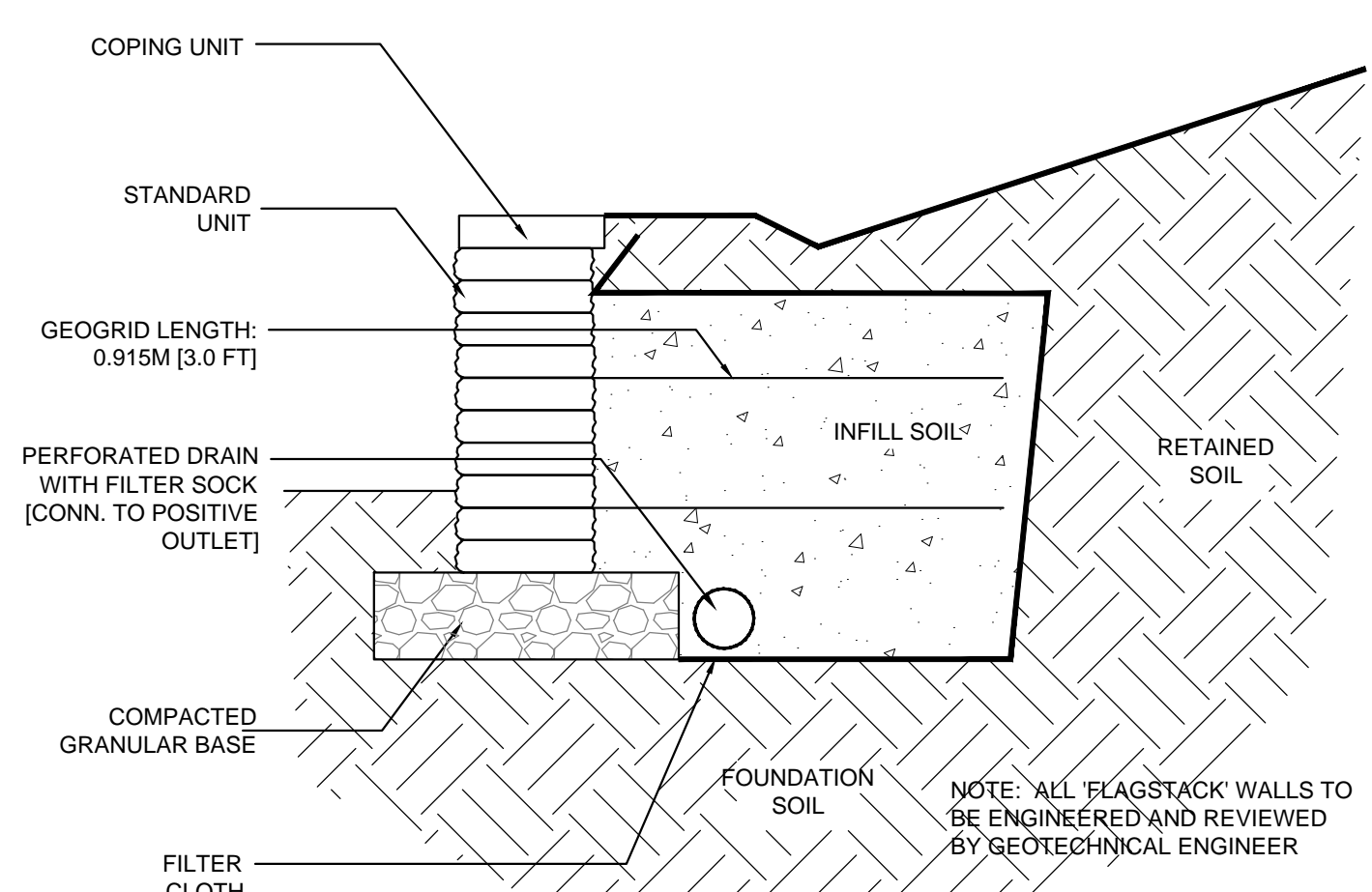
7 SECTION A-A
1/4" = 1'0"



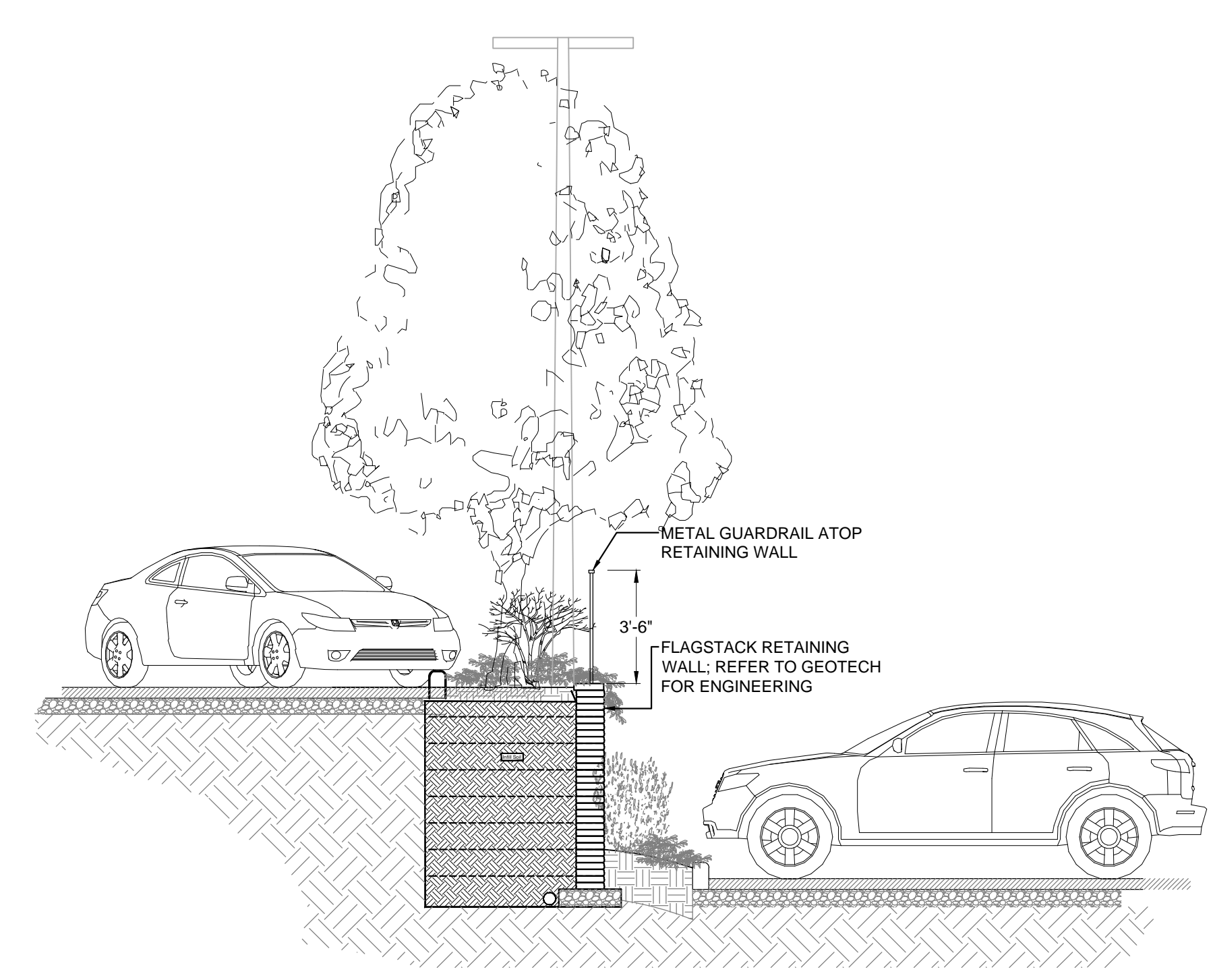
8 SECTION B-B
1/4" = 1'0"



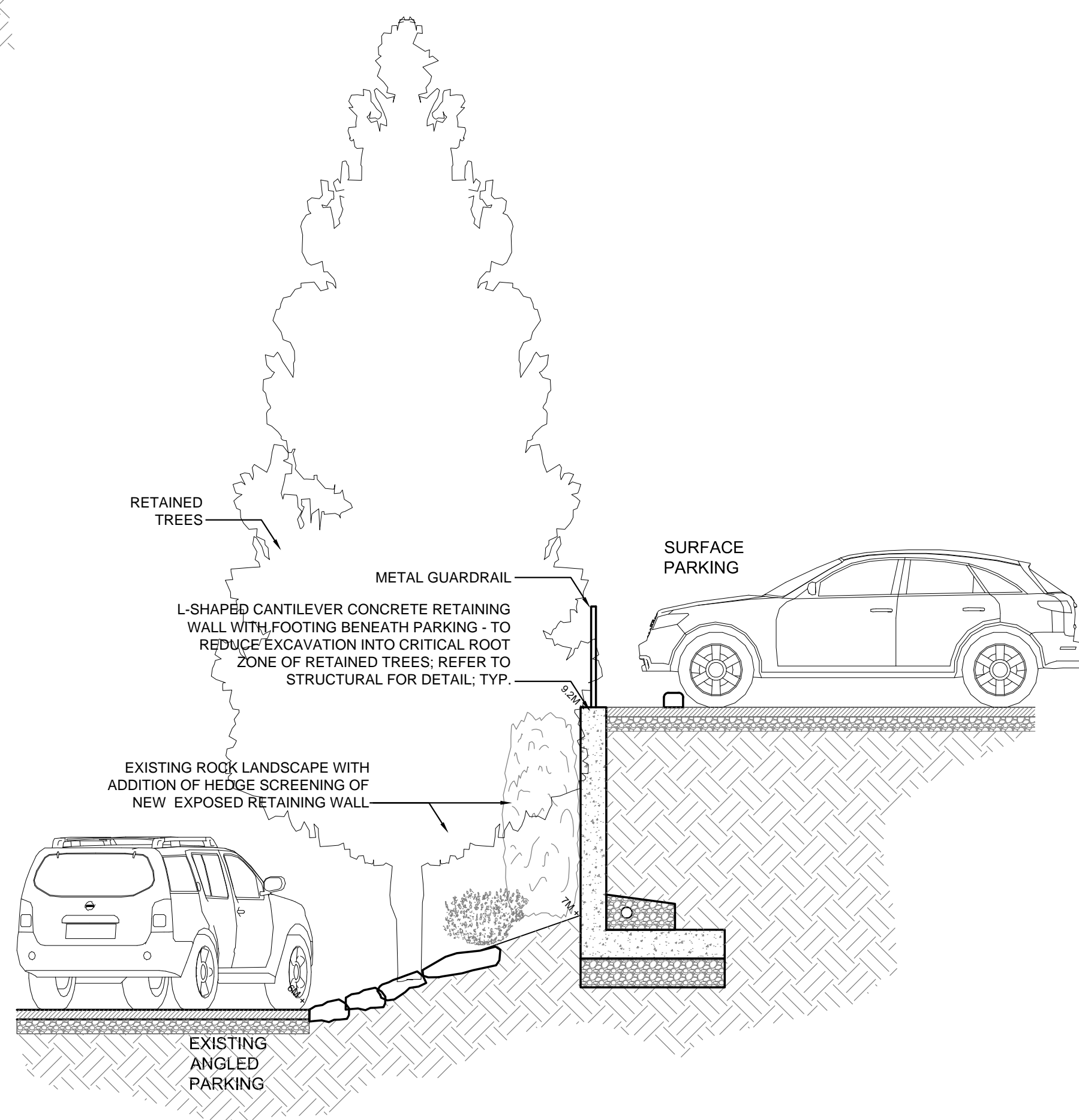
6 TREE & SHRUB PLANTING
1/4"=1'-0"



11 FLAGSTACK RETAINING WALL
1" = 1'0"



9 SECTION C-C
1/4" = 1'0"



10 SECTION D-D
1/4" = 1'0"

NO.	DATE	REVISION DESCRIPTION	DR.
2	17.FEB.22	RE-ISSUE FOR DP	CW
1	16.DEC.23	ISSUED FOR DP	CW

CLIENT: SEACLIFFE GROUP

PROJECT:

FAIRWINDS LANDING
3521 DOLPHIN DRIVE, NANOOSE BAY CITY
WITH: COLLABOR8 ARCHITECTURE + DESIGN INC.

DRAWING TITLE:
LANDSCAPE DETAILS

DATE: 16.DEC.21 DRAWING NUMBER:
SCALE: AS SHOWN
DRAWN: PCM CW
DESIGN: PCM CW
CHK'D: PCM PCM

L4
OF 5

