



WATERnews

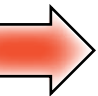
This edition of WaterNews provides an update on two important, and separate, initiatives:

- 1 Nanoose Bay Peninsula Water Service Area upgrades and improvements.
- 2 The Englishman River Water Service project.

NANOOSE BAY PENINSULA WATER SERVICE AREA UPGRADES AND IMPROVEMENTS

On Nov. 15, residents of the Nanoose Bay Peninsula Water Service Area will be voting on a borrowing referendum for improvements and upgrades required to their water system.

On Election Day, residents will be asked whether they support a bylaw allowing the RDN to borrow \$2.6 million to support a five-year capital plan to upgrade the current water distribution system.



A public meeting to provide details of the proposed referendum will be held on October 6, from 7pm to 9pm at Nanoose Place.

This \$2.6 million will be used for improvements such as watermain and pumphouse upgrades required to maintain the effective operation of the system. Providing funding for these system upgrades will prevent service disruptions and avoid higher costs to residents in the future.

While improvements to the water system are primarily required for existing users, there will be a benefit to future development as well. Development cost charges, also called DCCs, will ensure that new development in the area will pay its share of those system improvements.

If approved, the borrowing will result in parcel tax increases of approximately \$90 annually.

For more information on the Nov. 15 referendum for NBPWSA residents, please contact the Regional District of Nanaimo Water Services Department at (250) 390-6560 or (250) 954-3792.



ENGLISHMAN RIVER WATER SERVICE UPDATE

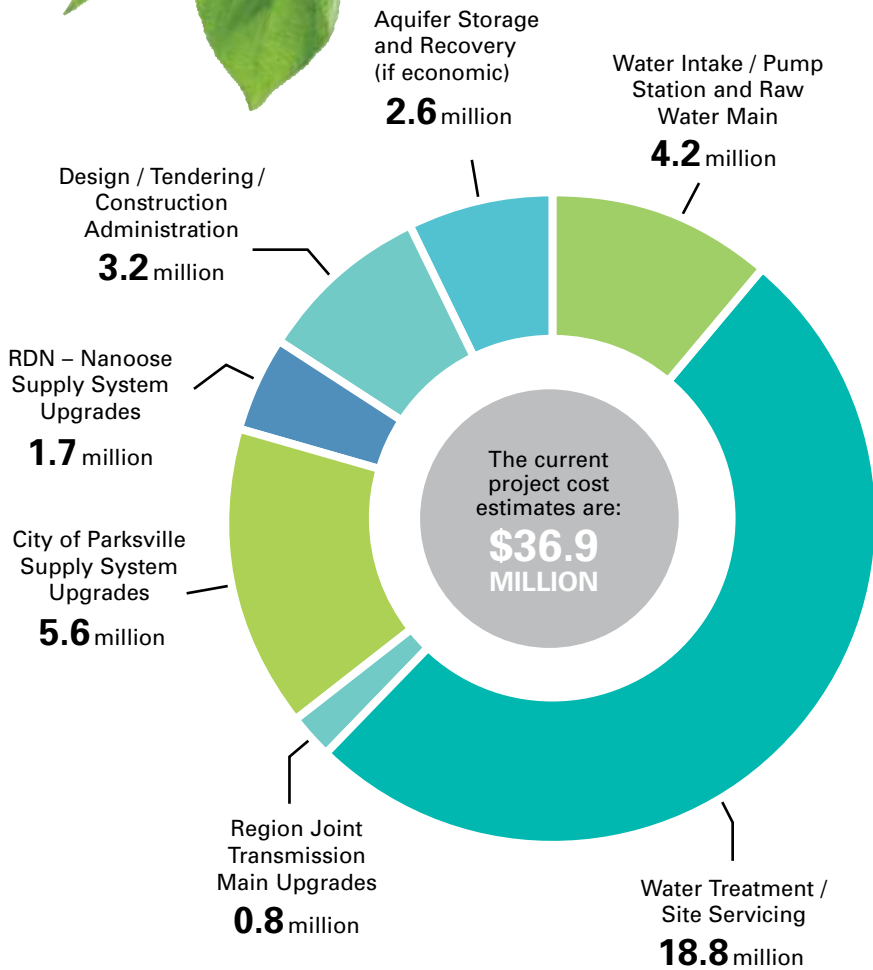
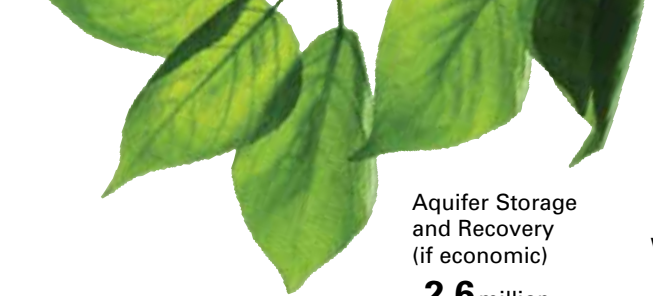
Nanoose Bay Peninsula Water Service Area residents rely on a combination of groundwater and Englishman River water. The Englishman River Water Service is a joint venture between the RDN (26 per cent) and the City of Parksville (74 per cent) for the supply of water from the Englishman River. Upgrades to the ERWS system are required in the coming years to improve reliability and capacity of the water intake, and to provide additional treatment as required by Island Health.

The ERWS will not be proceeding to referendum in the November 2014 election. A referendum to approve borrowing for the proposed water intake and treatment will be deferred while the ERWS seeks grant funding for the project from the federal and provincial governments.

In order to comply with changes Island Health imposed in 2009, the ERWS is required to build a new water treatment facility by December 2016 to satisfy the health authority's requirements for our water system operating permit.

The ERWS has submitted a detailed business case grant proposal to provincial and federal officials, and has notified Island Health that without significant senior government financial support, the partnership is not in a financial position to meet the December 2016 deadline for enhanced water treatment. With a formal reply from Island Health pending, the ERWS will proceed with a phased approach to this project, constructing a new intake in 2016, and phasing in the water treatment filtration as funding assistance comes available.





of Parksville water distribution system. Additional water supply capacity (a new water intake) must be developed to serve our population and ensure a healthy ecosystem for the future.

The ERWS is planning for the next 50 years. Treatment capacity will be added in phases, in order to optimize overall lifecycle costs, and reduce up front capital costs. The first phase of water treatment will allow 24,000 cubic metres of water to be treated daily. The final phase will add an additional 24,000 cubic metres, when it is needed. For some components, including river intake and distribution systems, it makes economic sense to build once for full capacity, and in those cases we will do so.

WHAT WILL IT COST?

The costs of the intake, joint distribution and treatment plant will be shared between the RDN (26 per cent) and Parksville (74 per cent) as per the ERWS Joint Venture Partnership. Each partner is entitled to their allotted portion of water. Costs associated with distribution systems benefiting one partner will be borne solely by the benefitting partner.

Growth will be a significant factor for water supplies in the Nanoose Bay Peninsula for years to come.

While current demand requires a surface water solution, existing zoning, coupled with development planned for Fairwinds and other neighbourhoods will continue to increase demand well into the future. To ensure the cost impacts of future development do not rest on existing users, a Development Cost Charge Bylaw is being developed to ensure that developers pay their fair share.

Questions?

If you have any questions please contact Water & Utility Services at 1-877-607-4111, rcu@rdn.bc.ca or visit the WaterSmart website at www.rdn.bc.ca

WHY DO WE NEED TO PROCEED WITH THIS PROJECT?

Sufficient clean, safe and reliable drinking water is essential to a healthy community. Drinking water standards are provincially regulated, and we have a responsibility to meet those standards in a manner that is fiscally responsible, protects human health, provides careful stewardship of surface water and ground water sources, and meets the needs of residents now and into the future. The existing ERWS river intake, located near the mouth of the Englishman River, requires replacement now, as it is unreliable and cannot provide sufficient water to meet our supply needs beyond 2016.

Conservation is a cornerstone of our planning, but managing demand alone will not be enough to ensure reliable water supplies for people and the environment.

In Nanoose Bay, up to 40 per cent of current summer water demand is supplied from the Englishman river via the City

www.rdn.bc.ca